

NEWSLETTER MARZO 2021

Materiales Avanzados



ULTIMOS DÍAS

Te recordamos que el próximo 31 de marzo es la fecha límite para enviar propuestas al reto lanzado por AIRBUS "Materiales sostenibles para un transporte aeronáutico más eléctrico".
[+info](#)

PROYECTOS

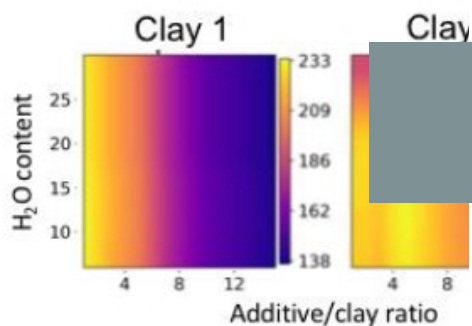
El Gobierno autoriza la financiación de la candidatura española al IFMIF-DONES en Granada

•
[+info](#)

IFMIF-DONES

International Fusion Materials Irradiation Facility
DEMO Oriented Neutron Source

area (BET)

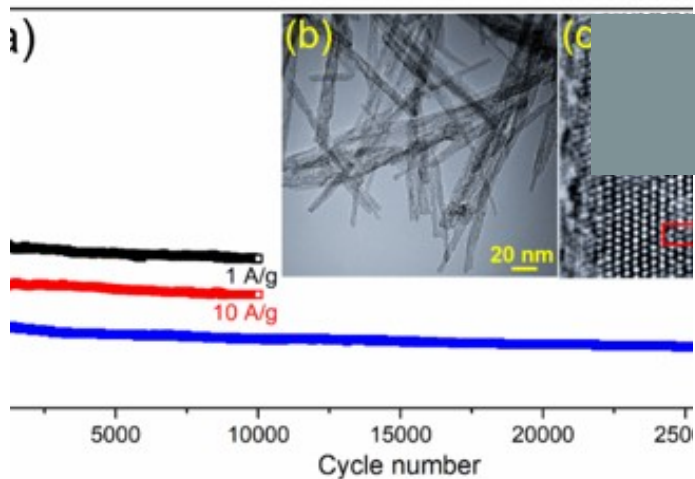


surface area of processed natural clays. Left – a statistical model for predicted clays shows good accuracy. Right – an application of the said model in parameter space to find processing conditions that maximize the surface area identified for various materials are specific to each of the materials.

IMDEA MATERIALS

IMDEA Materials has know-how in developing data-driven experimentation workflows that exploit machine learning algorithms to minimize the number of experiments involved in the development of materials tuned to specific applications and/or the chemical processes governing their synthesis and scale-up.
[+info](#)

IMDEA MATERIALS



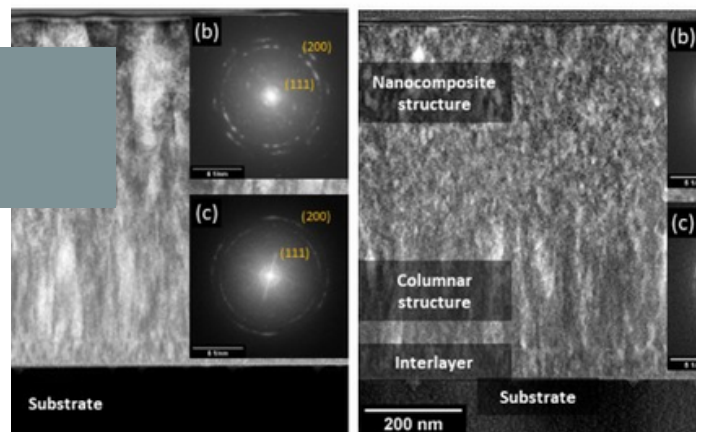
Although secondary Li-ion batteries are widely used for electrochemical energy storage, low energy (100-300 Wh kg⁻¹) and power density (250-400 W kg⁻¹) are limiting their applications in several areas including long-range electric vehicles.

[+info](#)

IMDEA MATERIALS

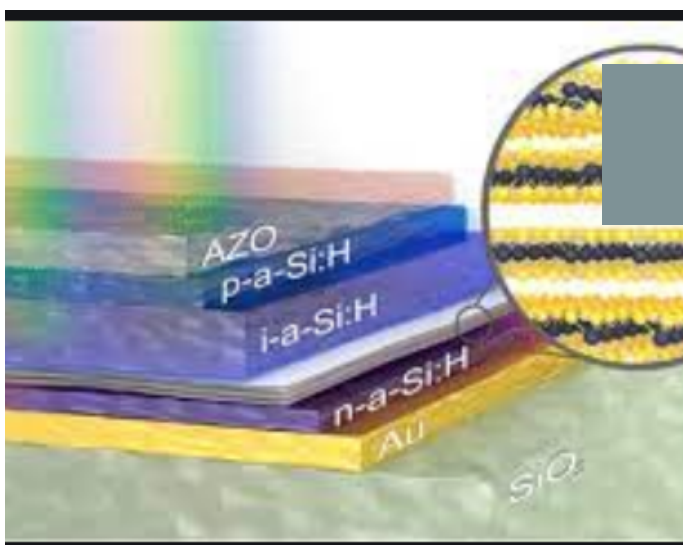
Titanium aluminum nitrides (TiAlN) are currently the most versatile coatings in terms of performance with various applications in industry

[+info](#)



Images of the cross-sections of a (Left) a TiN coating and (Right) a TiN coating with small particles for which the columnar growth is suppressed.

PUBLICACIÓN



Photoelectrocatalytic detection of NADH on n-type silicon semiconductors facilitated by carbon nanotube fibers

[+info](#)